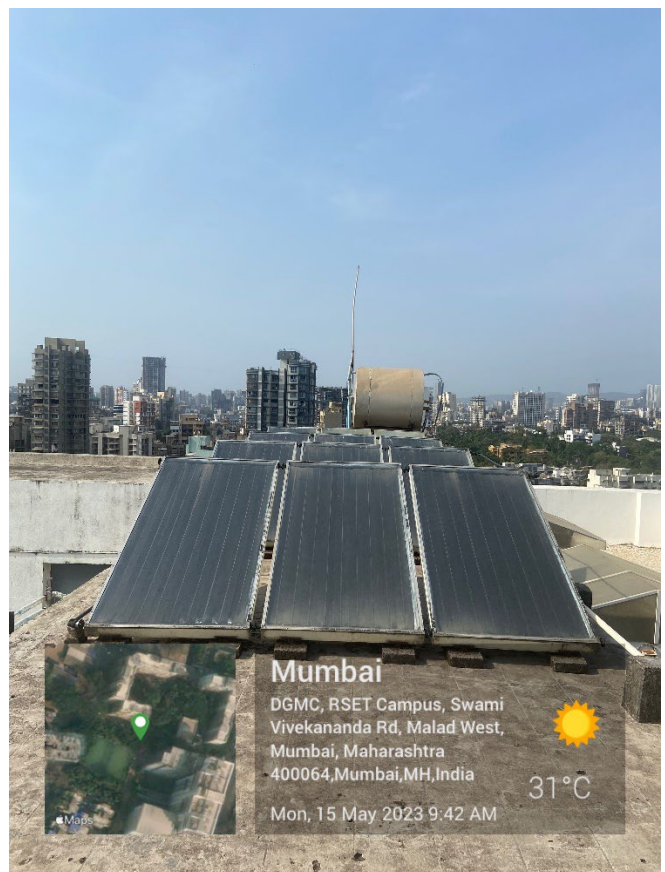
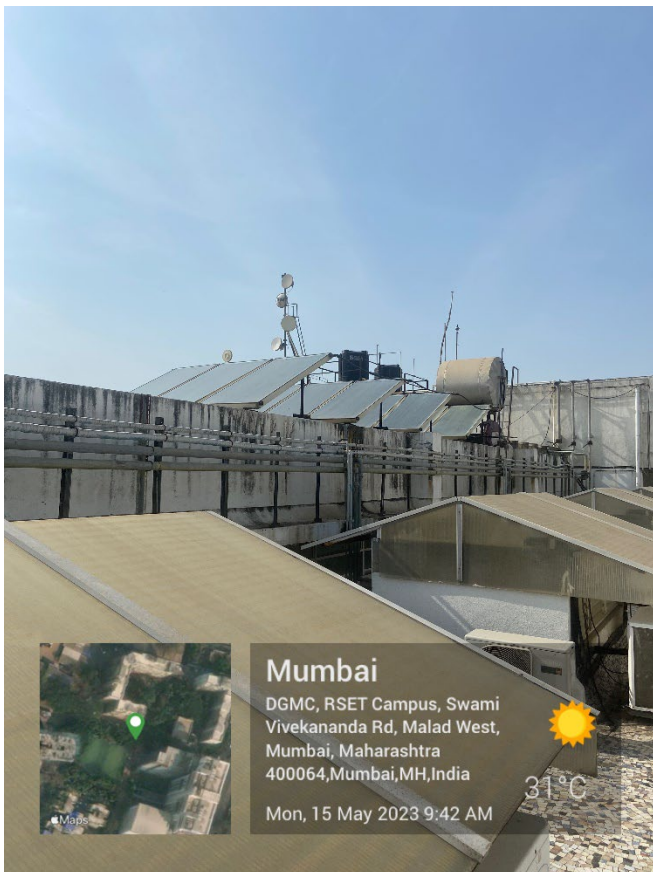


Geo tagged Images for Criteria 7.1.2

1. Alternate sources of energy and energy conservation measures
2. Management of Various types of degradable and non-degradable waste
3. Water conservation
4. Green campus initiatives
5. Disabled friendly, barrier free environment

Alternate sources of energy and energy conservation measures – Solar Panels installed at the Hostel



Management of Various types of degradable and non-degradable waste

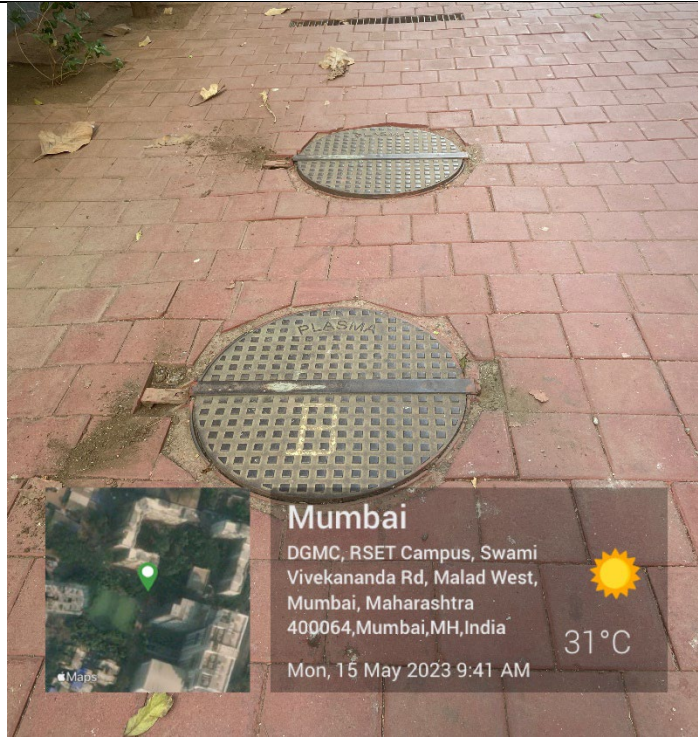


Waste Segregation Bins installed around the campus

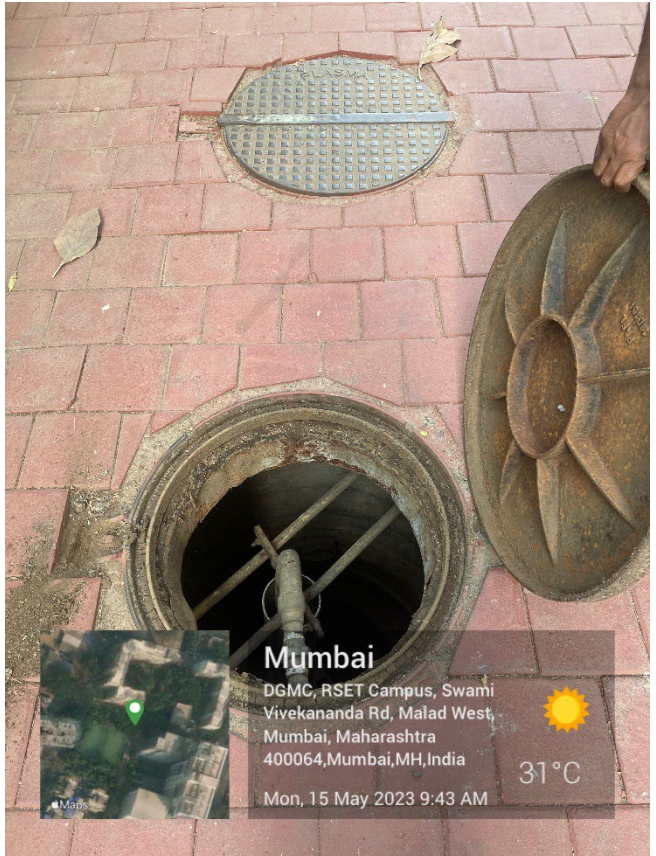


Plastic Bottle crushing Machine installed in the Canteen

Water Conservation



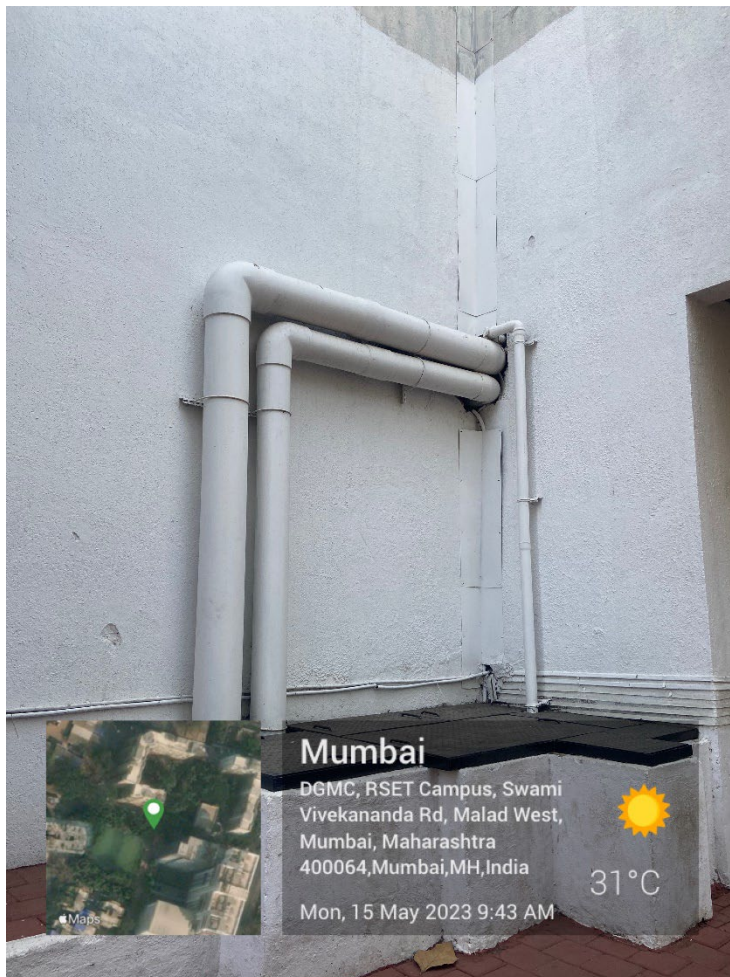
Borewell and Rain Water Tank



Borewell 1 & 2

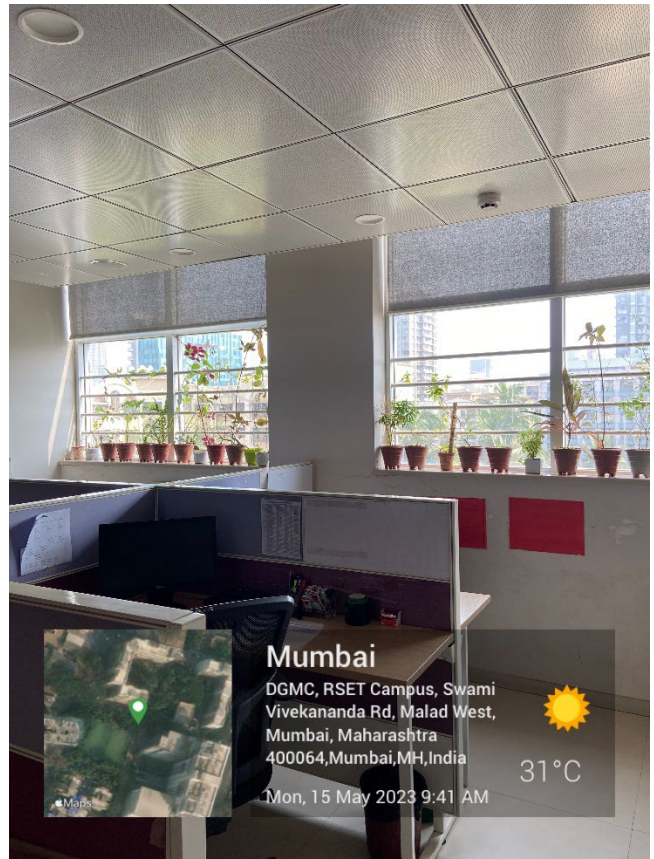


Rainwater Harvesting Tanks

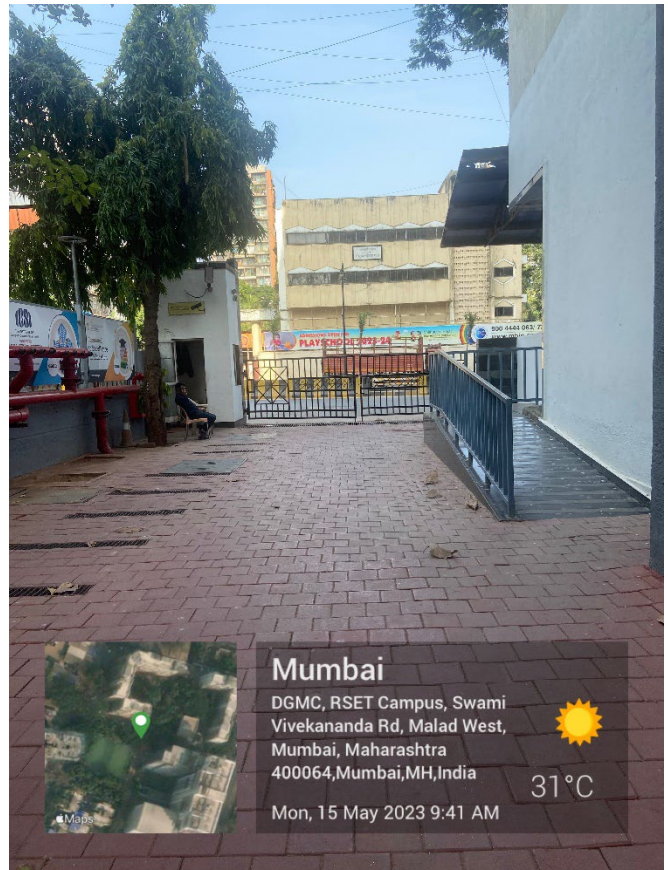
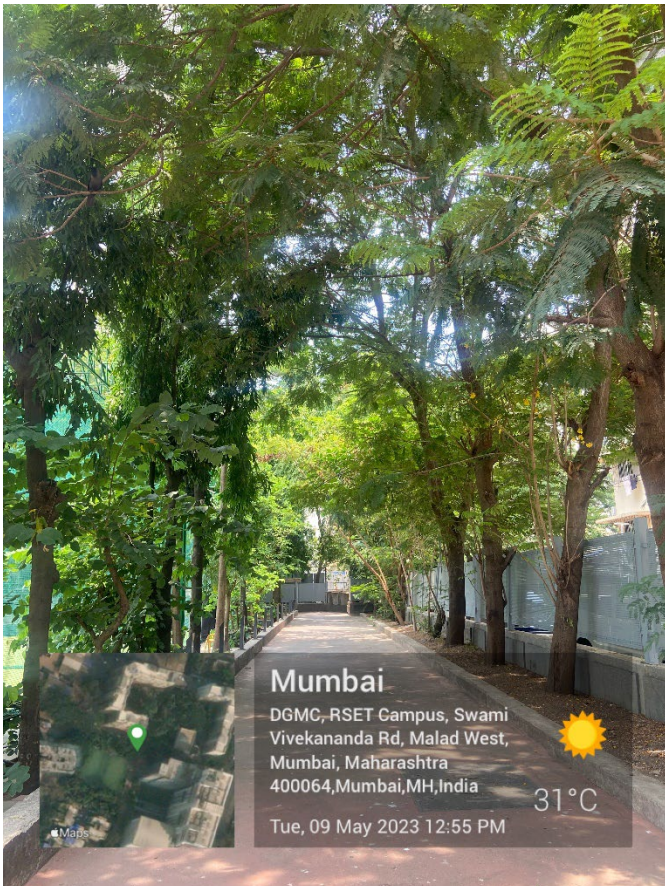


Rainwater Harvesting System (Pipes)

Green Campus Initiatives



Plants in Staffroom



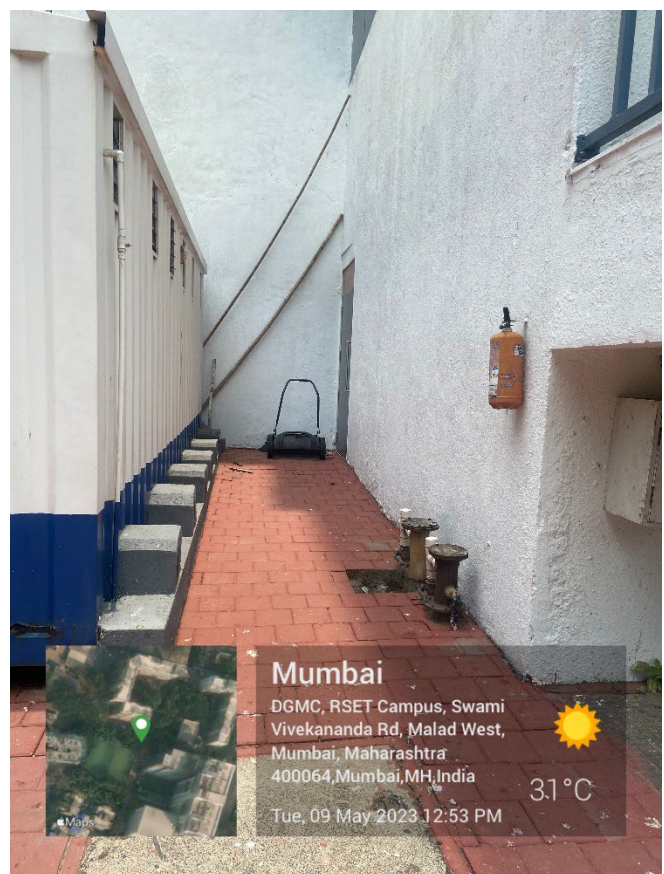
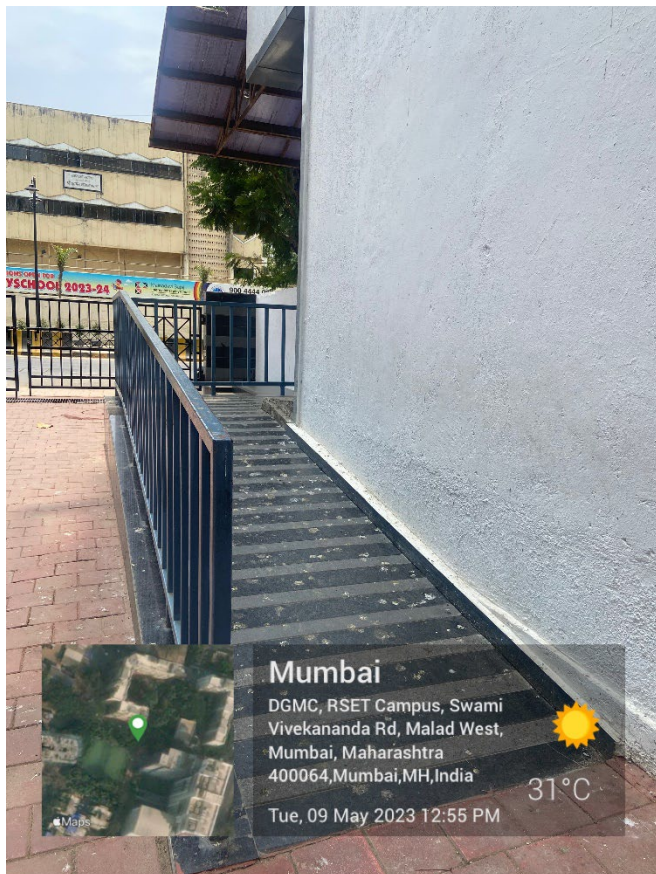
Tree Plantations at Campus

No Vehicals allowed in Campus

Disabled Friendly, Barrier free Environment



- The campus entry is barrier free
- Vehicle of anyone with disability is allowed to enter the campus
- Golf cart is provided to assist anyone in need





- Ramps are provided around the campus at strategic location for a hassle free entry in the campus and the college